

SPAXCO

SD series

Intelligent, Reliable, Cost-Efficient



7.5kW~300kW, 10 ~ 400Hp
1 ~55 m³/min, 35~1942 cfm
7 ~13 bar, 100 ~ 190 psig

Energy Efficient & Durable Compressor, The SD Series

If you are looking for a reliable and energy-saving screw air compressor, the new SPAXCO SD series is your perfect choice. The SD series of compressors are designed to be energy-efficient, durable, low maintenance cost, etc. These top of the line features enable SPAXCO compressors to outshine the competition in terms of innovation and cost savings.

NUMEROUS ADVANTAGES IN DETAILS



HIGHEST RELIABILITY AIREND

- ✓ Highly reliable performance airend
- ✓ Advanced 5:6 asymmetrical screw airend
- ✓ Large rotor profile
- ✓ Low rotation speed ensures astonishing performance
- ✓ Trouble-free and with low maintenance characteristics



HIGHLY-EFFICIENT IP54 MOTOR

- ✓ TEFC IP54 Class F electric motor
- ✓ Significantly Improved motor efficiency
- ✓ Direct coupling drive design, airend and motor have lower center of gravity reduce the noise and vibration



OPTIMISED COOLING SYSTEM

- ✓ Oversized aftercooler ensures an optimal cooling and lower discharge temperature
- ✓ Thermostatically-controlled axial fan reduce power consumption



STAINLESS STEEL AIR/OIL PIPES

- ✓ High temperature-resistant stainless steel pipes
- ✓ Leak-free and maintenance-free compared to typical rubber-hosed pipes
- ✓ Lower down-time



LOW MAINTAINANCE

- ✓ Designed for simple configuration of compressor flow circuit
- ✓ Minimum number of components and moving parts ensure low maintenance costs.
- ✓ Cost-effective maintenance program (optional)



ENERGY-SAVING

- ✓ Direct drive with coupling transmission ensure the transmission is totally effective.
- ✓ Integral intake valve ensure low load start and reduce power consumption



INTELLIGENT CONTROLLER

- ✓ User-friendly multi-language controller continuously monitors and displays overall system performance status
- ✓ Navigation includes warning indicator, current phase lost, wrong phase, over temperature, excess working pressure protections and etc.



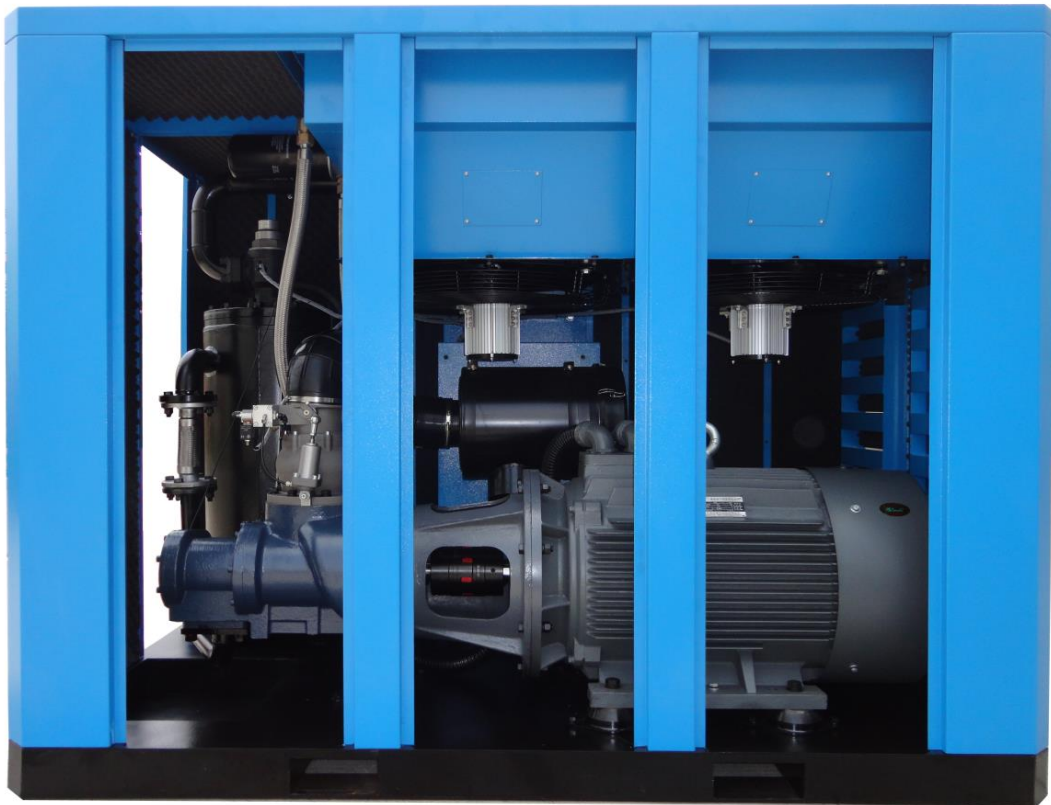
HIGHLY EFFICIENT FILTERING SYSTEM

- ✓ Heavy-duty oil and air filters with excellent purification capability ensure a clean and safe oil and air system
- ✓ Efficient separation system reduces pressure drop and energy cost
- ✓ 3-stage air-oil separation system (centrifugal, gravity and filter) ensures oil content < 3ppm.
- ✓ Perfect-fit filters for maximum performance and best efficiency



SPAXCO PROTECT 2

- ✓ Exceeds industry standard warranty
- ✓ 2-year extended warranty on airend - Protect 2 is our total commitment to quality and worry-free ownership



TECHNICAL DATA

SPAXCO Primo Model	Max Pressure Bar/psig	Effective FAD* M ³ /min/cfm	Motor Power kW/hp	Dimensions (L x W x H) mm	Outlet Conn. in	Weight kg	Noise Level** dB(A) ±2
SD7A	8/115	1.1 / 35.32	7.5 / 10	1000 x 600 x 1000	G3/4	240	66
	10/150	0.95 / 33.55					
	13/190	0.8/28.25					
SD11A	8/115	1.6 / 56.50	11 / 15	1040 x 800 x 1130	G3/4	400	70
	10/150	1.4/ 49.44					
	13/190	1.2/42.4					
SD15A	8/115	2.2 / 84.76	15 / 20	1040 x 80 x 1180	G3/4	410	70
	10/150	2.0 / 63.57					
	13/190	1.7/60.0					
SD22A	8/115	3.6/ 134.20	22 / 30	1380 x 850 x 1410	G1 ¼	620	70
	10/150	3.2 / 113.0					
	13/190	2.9/102.41					
SD30A	8/115	5.0 / 176.56	30 / 40	1380 x 850 x 1410	G1 ¼	680	70
	10/150	4.4 /155.39					
	13/190	3.7/130.66					
SD37A	8/115	6.2/ 218.95	37 / 50	1600 x 1000 x 1370	G1 ½	840	74
	10/150	5.7/201.3					
	13/190	5.1/180.1					
SD45A	8/115	7.7 / 271.92	45 / 60	1600 x 1000 x 1370	G1 ½	890	74
	10/150	7.0/ 247.2					
	13/190	5.8/204.83					
SD55A	8/115	9.8/346.09	55 / 75	2050 x 1200 x 1500	G2	1735	75
	10/150	8.7 / 307.24					
	13/190	7.5/264.86					
SD75A	8/115	13.3/ 469.69	75 /100	2050 x 1200 x 1500	G2	1850	75
	10/150	11.6 / 409.65					
	13/190	9.8/346.09					

The data and performances were recorded in accordance with standard ISO 1217.

The sound level was measured in accordance with PNEUROP/CAGI standards which will vary according to the installation condition.

The 16bar compressor for Laser cutting machine is available upon request.

TECHNICAL DATA (Continue)

SPAXCO Primo Model	Max Pressure Bar/psig	Effective FAD M ³ /min/cfm	Motor Power kW/hp	Dimensions (L x W x H) mm	Outlet Conn. in	Weight kg	Noise Level dB(A) ±2
SD90A	8/115	15 / 529.73	90 / 125	2150 x 1300 x 1700	G2	1920	75
	10/150	14.6/515.60					
	13/190	12.3/434.40					
SD110A	8/115	19.0 / 670.98	110 / 150	2800 x 1650 x 1850	DN65	3030	75
	10/150	17 / 600.35					
	13/190	14.6/515.6					
SD132A	8/115	23 / 812.25	132 / 180	2800 x 1650 x 1850	DN65	3130	75
	10/150	20 / 706.3					
	13/190	18/635.67					
SD160A	8/115	26.5 / 953.50	160 / 215	2800 x 1650 x 1850	DN80	3210	75
	10/150	22.5/794.6					
	13/190	20.1/709.83					
SD185A	8/115	31/1094.76	185/250	2800 x 1650 x 1850	DN80	3470	78
	10/150	28/988.82					
	13/190	25.1/886.4					
SD220A	8/115	36.8/1299.6	220/300	2900 x 1860 x 2000	DN100	4500	78
	10/150	32.2/1137.14					
	13/190	28.5/1006.5					
SD250A	8/115	42/1483.23	250/340	2800 x 1650 x 1850	DN100	4600	78
	10/150	38.8/1370.22					
	13/190	34.6/1221.9					
SD300A	8/115	48.2/1702.2	300/400	2800 x 1650 x 1850	DN125	7000	78
	10/150	42.6/1504.4					
	13/190	39.8/1405.5					

The data and performances were recorded in accordance with standard ISO 1217.

The sound level was measured in accordance with PNEURO/PAI standards which will vary according to the installation condition.

The 16bar compressor for Laser cutting machine is available upon request.